

Stainless Steel Centrifuges

Enabling even the most challenging separations.

Pioneering Cell Separation Solutions

CARR Biosystems brings over 25 years of expertise to cell separation solutions. Our systems are built in state-of-the-art US facilities following the highest standards of quality control to reliably enable unique applications. That's why top biotechnology companies all around the world rely on our robust and powerful separation equipment.



Performance

Our reliable and robust centrifuges address even the most challenging separations.



Scalability

Our equipment accommodates small process development volumes to very large commercial needs, allowing for seamless scale-up and scale-down.



Versatile

Our stainless steel centrifuges are designed to serve a variety of markets.

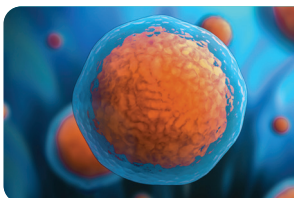
Find the Right Centrifuge for Your Application

The Powerfuge® Family

- Designed for bacteria, fungi, proteins and sub-micron particles
- Proven for the production of plasmid DNA, plasma proteins, vaccines, cellular agriculture and specialty chemicals
- Highest g force in the market (up to 20,000 x g)
- Bowl volumes from 1.1 L to 36 L
- Flow rate from 250 ml/min to 1,700 L/hr
- Solid-bowl centrifuges
- Automatic solid discharge
- CIP and SIP capabilities
- Hazardous duty option available

The Viafuge® Family

- Designed for mammalian, insect and plant cells
- Typical cell viability of 98% or higher
- Yield up to 98%
- G-forces up to 10,000 x g
- Bowl volumes from 1.4 L to 16.7 L
- Flow rate up to 2,400 L/hr
- Solid-bowl centrifuges
- Automatic centrate discharge
- CIP and SIP capabilities



Markets We Serve

Transforming bioseparation across applications.





- Microbial Fermentation
- Cellular Agriculture
- Biologics
- Vaccines
- Plasmid DNA
- Others



Technology Comparison

Differentiation/Technology	Powerfuge	Viafuge	Disc Stack Centrifuges	Depth Filtration	TFF
High G-force (Up to 20,000 x g)	✓	No	No	No	No
Configurable for Closed Operations and Sterile	✓	✓	✓	No	✓
Minimizes Solid Waste	✓	✓	✓	No	No
Viable Cell Recovery and Washing	No	✓	No	No	No
Dewatering (Dry Cake) + Submicron Clarification	✓	No	No	No	No
Auto Solid Discharge	✓	✓	✓	No	No

Uniquely Scalable Centrifuge Families

Scale from early stage development to commercial-scale manufacturing and licensure.

			
Powerfuge Pilot®	Powerfuge P6®	Powerfuge P12®	Powerfuge P18®
Volume: 1.1 L	Volume: 1 L	Volume: 8 L	Volume: 36 L
Flow Rate: Up to 60 L/hr for batches up to 100 L	Flow Rate: Up to 60 L/hr for batches up to 100 L	Flow Rate: Up to 500 L/hr for batches up to 500 L	Flow Rate: Up to 1,700 L/hr for batches up to 2,000 L
G-Force: Up to 20,000 x g	G-Force: Up to 20,000 x g	G-Force: Up to 20,000 x g	G-Force: Up to 20,000 x g
Footprint (Approx.): 35.6 cm wide x 56 cm deep x 56 cm high (14" x 22" x 22")	Footprint (Approx.): 66 cm wide x 139 cm deep x 180.4 cm high (26" x 55" x 71")	Footprint (Approx.): 78.7 cm wide x 172.7 cm deep x 203.2 cm high (31" x 68" x 80")	Footprint (Approx.): 27.6 cm wide x 25.6 cm deep x 38 cm high (70" x 65" x 97")
Weight: ~115 kg (253 lbs)	Weight: ~1,090 kg (2,403 lbs)	Weight: ~1,924 kg (4,240 lbs)	Weight: ~2,948 kg (6,500 lbs)

	
Viafuge Pilot®	Viafuge V12®
Volume: 1.4 L	Volume: 9.6 L or 16.7 L
Flow Rate: Up to 240 L/hr for batches up to 500 L	Flow Rate: Up to 40 L/min for batches up to 2,000 L
G-Force: Up to 10,000 x g	G-Force: Up to 5,000 x g
Footprint (Approx.): Centrifuge: 5.5 cm wide x 8.3 cm deep x 11.8 cm high (14" x 21" x 30") Cabinet: 6.3 cm wide x 6.3 cm deep x 11.8 cm high (16" x 16" x 30")	Footprint (Approx.): 127 cm wide x 249 cm deep x 287 cm high (50" x 98" x 113")
Weight: ~136 kg (300 lbs)	Weight: ~1,119 kg (2,460 lbs)